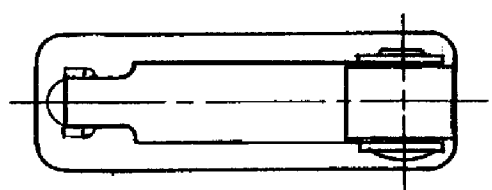
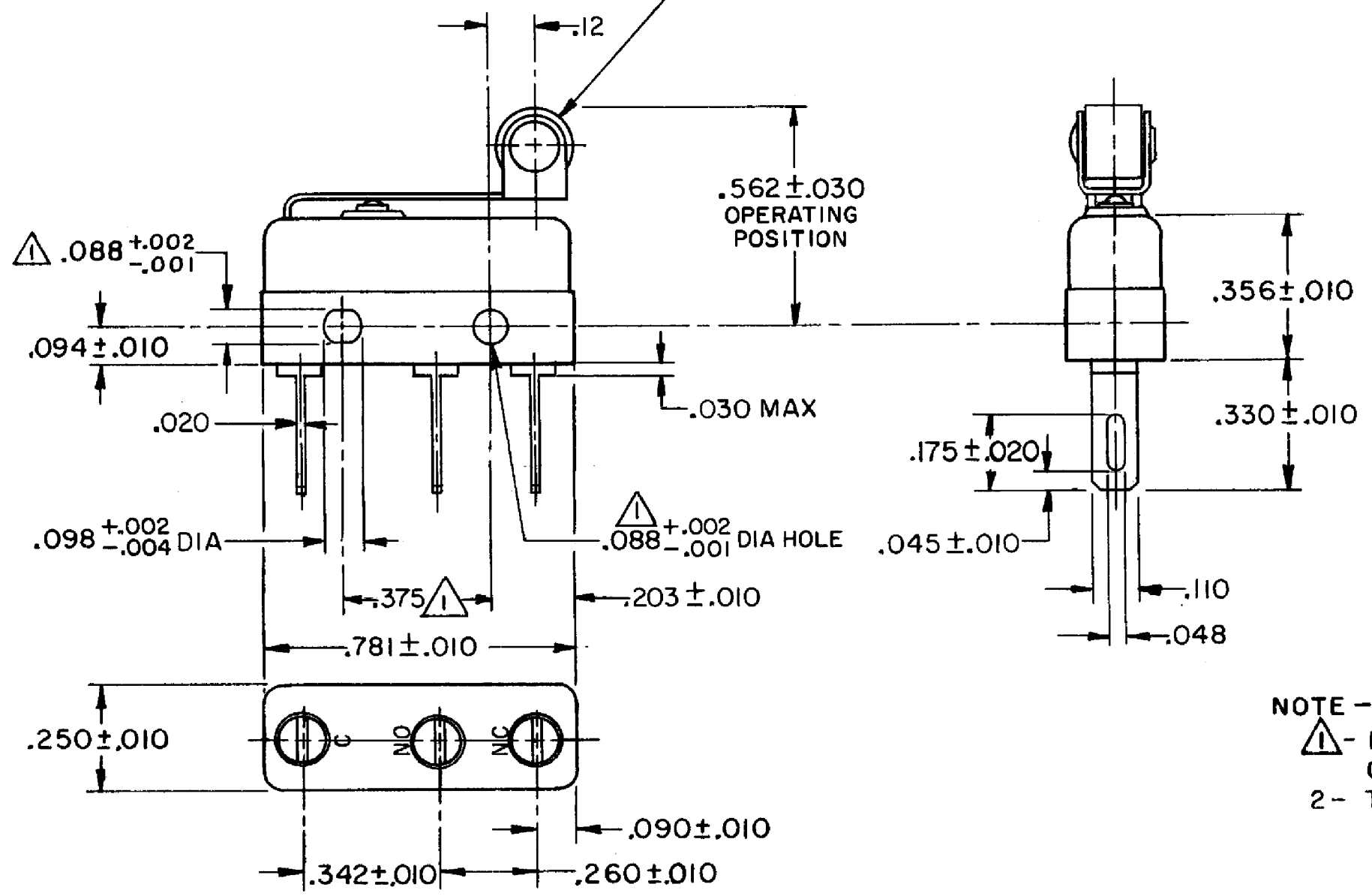


HONEYWELL  
PART NUMBER  
**111SM602-H4**  
PRODUCT CODE  
TYJ9012

REV	DOCUMENT	CHANGED BY	CHECK
8	0038225	PRS 04APR08	BLR



.187 DIA X .125 WIDE OIL BRONZE ROLLER (.005 T. I. R.)



NOTE -  
 $\Delta$  - MOUNTING HOLES WILL ACCEPT PINS OR SCREWS OF .087 MAX DIA ON .375 ± .002 CENTERS  
 2 - TERMINALS ARE PLATED FOR SOLDERING

RELEASE NO.	PR - 3451
REPLACES	-

CHARACTERISTICS	
OPERATING FORCE	7 OZ MAX
RELEASE FORCE	2 OZ MIN
PRETRAVEL	.219 MAX
DIFFERENTIAL TRAVEL	.025 MAX
OVERTRAVEL	.030 MIN

ELECTRICAL DATA		
CONTACT ARRANGEMENT SPDT		
30 VOLTS DC RATING		
	SEA LEVEL	50,000 FT
INDUCTIVE	3 AMP	2.5 AMP
RESISTIVE	5 AMP	5 AMP
MAXIMUM INRUSH 24 AMP		
APPROVALS	KEMA, CE	5A, 250V ~ T85 1E4
	UL, CSA	5A, 250 VAC

DESIGN UNITS: INCH
TOLERANCES UNLESS NOTED:
NO PLACE X ±
ONE PLACE .X ±
TWO PLACE .XX ±
THREE PLACE .XXX ±
FOUR PLACE .XXXX ±
ANGLES ±
THIRD ANGLE PROJECTION

DRAWN	VK	29 OCT 07
CHECK	RJ	29 OCT 07
THIS DRAWING COVERS A PROPRIETARY ITEM AND IS THE PROPERTY OF HONEYWELL. THIS DRAWING IS NOT TO BE COPIED OR USED WITHOUT THE PERMISSION OF HONEYWELL.		
INTERPRET PER ANSI Y14.5M-1982 OTHER HONEYWELL ENGINEERING STANDARDS MAY APPLY		
RASTER		

<b>Honeywell</b>			
TITLE <b>SWITCH - BASIC</b>			
SIZE	TYPE	DRAWING NAME	REV
<b>B</b>	<b>I</b>	<b>111SM602-H4</b>	<b>8</b>
SCALE	-	WEIGHT .008 LB MAX	SHEET 1 OF 1